

Products have been intentionally chosen for their quality, style and superior reputation.

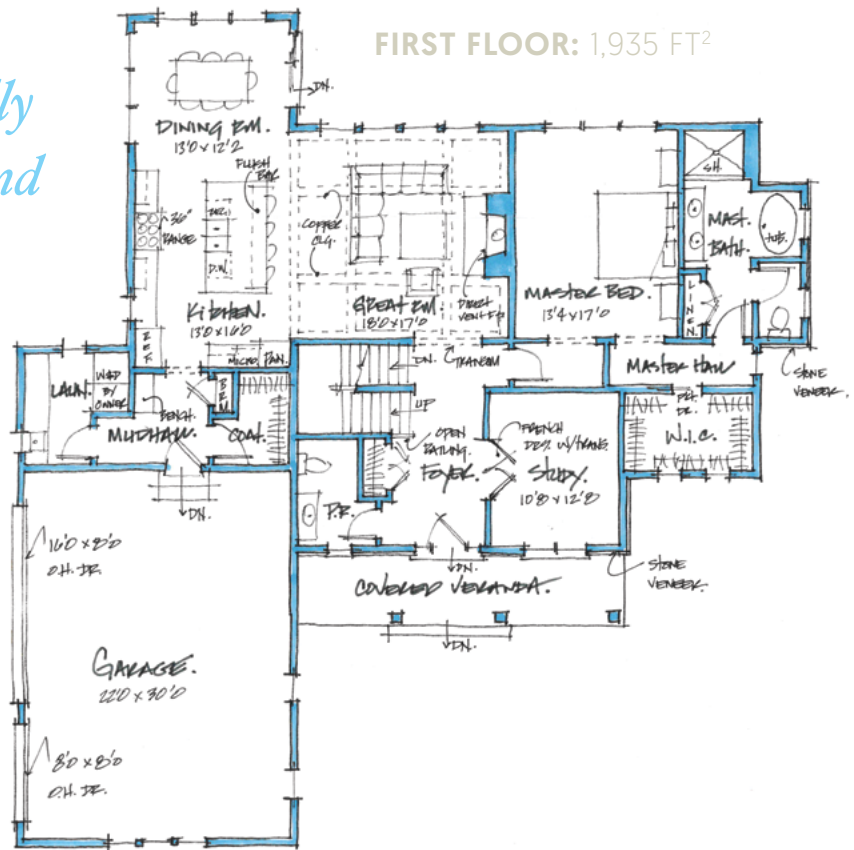
EXTERIOR FEATURES

- Focus On Energy Qualified Home
- R-21 High-Density Fiberglass Batt Insulation at walls
- R-50 Loose Fill Cellulose Insulation at ceiling where possible
- Reinforced 9'-0" Poured Concrete Foundation
- LP Smartside Board & Batten Siding and Trim
- Halquist Thin Cut Stone
- Andersen Double Glazed 400 Series Casement Windows: Vinyl Exterior / Wood Interior
- Andersen Double Glazed 100 Series Gliding Patio Door
- C.H.I. Stamped Carriage House Garage Doors
- Concrete Drive, Sidewalk, and Patio

INTERIOR FEATURES

- Interior designed by Karen Kempf Interiors
- Coffered Ceiling in the Great Room
- Shaw Inspirations Engineered Hardwood Floor
- Dura Supreme Cabinetry w/Soft Close Doors and Drawers
- Quartz Countertops Throughout
- Jenn-Aire Appliances
- Superior Direct Vent Fireplace

FIRST FLOOR: 1,935 FT²



SECOND FLOOR: 1,116 FT²

